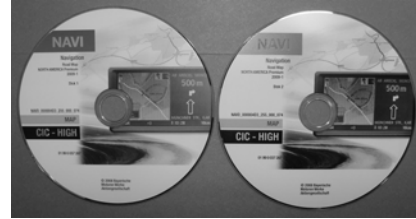


INFORMATION

- E9x (3 Series) and E82/E88 (1 Series) from 09/08 with option 609
 - Road Map 2009-1 for the Car Information Computer (CIC) navigation system
- NAV road map set shipped to all BMW Centers through the Automatic Tool Shipment Program

INFORMATION

- CIC NAV road map set contains two DVD's



INFORMATION

- Current CIC replacement parts come with a preloaded NAV road map 2009-1
 - No need to update the road map
- Store the NAV road map set 2009-1
- Aftersales & Marketing Info PB 650109
- SI B65 05 09 follows

INFORMATION

- E83 (X3), E60 (5 Series) up to 11/05
 - Recall for OC3 mat (update)



INFORMATION

- Error 200.16 with some OPS/OPPS heads corrected with UPD-DIS update V17.2 in association with DIS V56
- **ONLY** use the following equipment when performing the recall

INFORMATION

- E83
 - DIS V56 updated with UPD-DIS V17.2
 - ISTA D2.10.0 or later
- E60
 - DIS V56 updated with UPD-DIS V17.2
 - DO NOT use ISTA D2.10.0 or DIS V55

INFORMATION

- B65 19 08 has been updated
- E60/E61 with sport seats will be released into the recall shortly

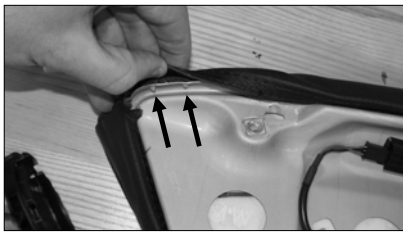
SITUATION

- E70 (X5), E71 (X6) produced up to 8/08 and equipped with Comfort Seats
 - Thigh support cover loose



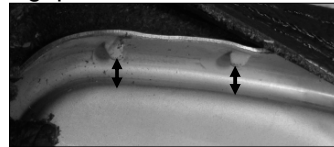
CAUSE

- Insufficient fastening of the cover to the retainers



FIELD

1. Remove the thigh support from the seat
2. Pull back the loose material
3. Bend the retaining tabs inward to achieve a 3-4mm gap

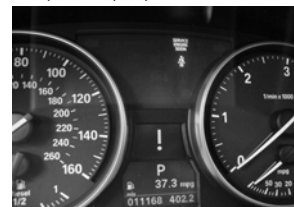


FIELD

4. Secure the cover by pressing it down into place
 5. If it will not lock into place and the plastic retaining flange is damaged, the cover needs to be replaced
- SI B52 02 09

Situation

- E90 (3 Series) E70 (X5) with M57Y Diesel up to 4/09



- Service Engine Soon lamp illuminated

SITUATION

- Fault 46CE: Reduction agent, pressure line heater activation - short to ground is stored in the DDE
- This fault can be set when temperatures are low enough to require active tank heating

CAUSE

- DDE diagnostic software error

FIELD

Do not replace any parts!

- Reprogram the vehicle using ISTA/P 2.33.1 or higher (April 2009)
- Targets:
 - E89X-09-03-520
 - E070-09-03-520

FIELD

- SI B to be released



SITUATION

- E9x (3 Series)
 - Buzzing noise from the door speakers



CAUSE

- Contact between the loud speaker and surrounding items (vapor barrier, door panel)
- Possibly other root causes

FIELD

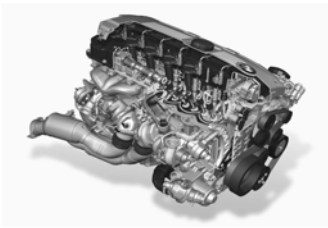
- MSD81 (from 3/08)
- Reprogram the vehicle using ISTA/P 2.33.0 or higher

FIELD

- After reprogramming with ISTA/P clear the vehicle faults and DME adaptations
- If misfire faults return, proceed with normal diagnosis using the recommended test plans to determine the cause

FIELD

- SI B12 05 09 is in preparation



SITUATION

- E9x (3 Series) produced from 9/08 and equipped with Cold Weather Package
 - Heated steering wheel turns off after 5-10 seconds.



CAUSE

- Normal function of power management
 - Steering wheel heater first consumer affected
 - Dip in voltage for 1st few seconds
- Service solution under investigation

FIELD

- Do not replace any parts
- Perform energy diagnosis
- Explain system function to customer
- SI B32 01 09 to follow
- This SI will be updated as soon as a solution is available.

SITUATION

- E9x (3 Series) except M3 and E82/E88 (1 Series)
 - Creaking or groaning noise from the front of vehicle during compression/rebound of suspension

SITUATION

- Noise when going over 'speed bump' type surfaces at low speeds
- Noise more prevalent under 40° F
- Noise may be gone when vehicle at operating temperature

CAUSE

- Rubber mount material for the front sway bar

FIELD

- Verify the noise is coming from the sway bar bushings
- Replace the front sway bar bushings with improved parts

FIELD

- Use bushing P/N 31 30 6 778 064 for all models with rear wheel drive (1 & 3 Series)
- Use bushing P/N 31 30 6 778 066 for models with AWD (3 Series)
- Note: Do not apply any type of lubricant to new bushings
- SI B31 01 09 to follow

SITUATION

- E70 (X5), E90 (3 Series) with M57Y Diesel
 - Service Engine Soon illuminated
 - "Reduce Engine Power" displayed
 - FC 4521, Charge-air pressure too high, or
 - FC 4530, Charge-air pressure, too low



CAUSE

- Possible
 - Charged air leakage in the intake manifold
 - Air filter/air path clogged
 - Incorrect operation of wastegates or bypass valve
 - Intake pressure sensor malfunction

FIELD

- Do NOT use ISTA test module B1365_D7LMS (Air Mass System Test)
- Test is not applicable for M57Y engine and may lead to incorrect conclusions
- Air System Test will be corrected with future releases of ISTA

FIELD

- Perform test modules:
 - B1362_D6TRK (turbine control flap 1)
 - B1362_D6WGV (turbine control flap 2)
 - B1362_D6VBK (multistage turbo-charging)

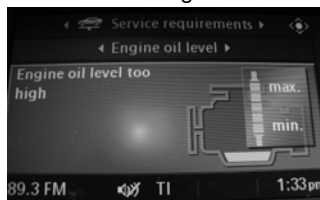
FIELD

- Check for intake leaks using appropriate smoke machine (preferably VACUTECH® Smoke Machine 625-522B-BMW)
- With non-BMW approved smoke machines do not exceed 0.04 bar pressure (13" H₂O)
- SI B12 10 09



SITUATION

- E70 (X5) with N52K from 9/08 to 3/09
 - Oil Level shows as too high



SITUATION

Also affected are E70 N52K vehicles produced up to 9/08, but which were programmed between 9/08 and 3/09 using Progman versions V30.x through V32.1 or ISTA/P 2.32.1

CAUSE

- DME calibration error which was introduced in E070-08-09-5xx

FIELD

Verify engine oil fill quantity correct

- 6.5 liters / 6.9 quarts including filter
- Do not replace the QLT sensor!
- Reprogram the vehicle using ISTA/P 2.33.0 or higher

- SI B12 03 09 to be released

SITUATION

- M3 (E9x) with S65



– Service Engine Soon lamp illuminated

SITUATION

- FC 2AFD (Relative time plausibility signal) stored in MSS60 DME

SITUATION

- Situation reproducible in low ambient temperature when warmed engine is turned off
- IHKA REST function on for 10-15 min

- Engine turned on again



CAUSE

- DME diagnostic software error (incorrect evaluation of differential between engine oil and coolant temperatures)

FIELD

- Clear fault memory and release vehicle
- Do not replace any components for this type of complaint
- Fault does not affect drivability/emissions
- DME software update planned for 09/09
- SI B12 04 09

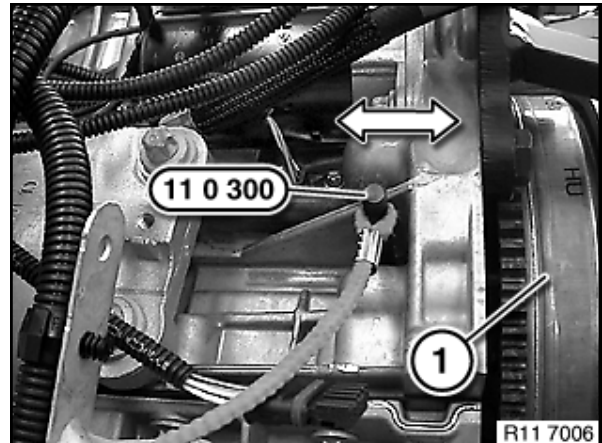
INFORMATION

- All models equipped with N52, N52K and N54 engines
- Difficulty Installing TDC Alignment Pin Special Tool 11 0 300



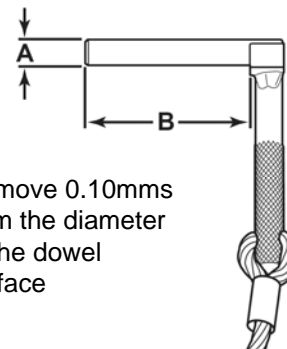
INFORMATION

- Special Tool 11 0 300 is difficult to install as described in repair instructions when checking or adjusting engine mechanical timing.



INFORMATION

- Tool may bind in the bore of an N52 or N52K crankcase
- Do not modify the engine crankcase

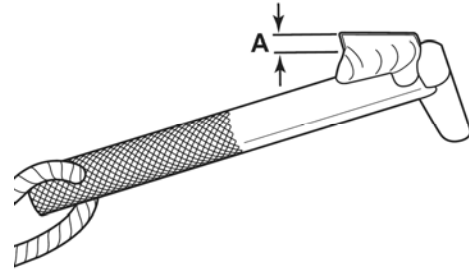


GRUSB1109-11

INFORMATION

- N54 engine
 - Handle may interfere with the low pressure fuel supply line support

Remove 2-3 mms of material.



GRUSB1109-12

INFORMATION

- Refer to SI B11 02 09 for details

SITUATION

- E63/64 (6 Series) with ZF 6HP26TU from 09/07 up to 11/08
- E60/61 (5 Series) and ZF 6HP from 03/07 up to 11/08

– After start gear position D or R cannot be selected



SITUATION

- Combination of various fault codes are stored in GWS shifter
 - (e.g. A828, A829, A82C/D/E/F, A834, A839, A83A/D/E)

CAUSE

- GWS software error

FIELD

- Using ISTA, check GWS part number via
 - Control unit tree
 - GWS
 - Call up ECU functions
 - Identification (BMW Part Number)
- If GWS Part number is:
 - 61 31 9 174 981 / 9 189 638 or
 - 61 31 9 174 980 / 9 189 640

FIELD

- Reprogram vehicle with current version of ISTA/P (improved software since ISTA/P 2.32.1)
- SI B25 01 09

SITUATION

- E71 (X6) with N63



- Service Engine Soon lamp is illuminated

SITUATION

- 2A12: DMTL magnetic valve, input signal - short circuit after minus
- 2A18: DMTL heating: input signal - short circuit after minus
- 2B27: DMTL diagnosis pump, activation: cable error - short circuit to ground

CAUSE

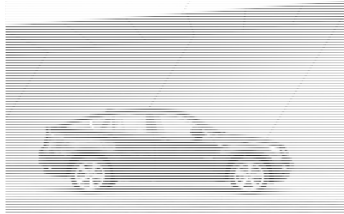
- Under Investigation
- DMTL diagnosis is still active with a low vehicle state of charge (SOC)

FIELD

- Do not replace the DMTL pump!
- Perform the energy diagnosis test plan
- Ensure that the battery is fully charged!

FIELD

- SI B to be released



SITUATION

- E70 (X5) with M57Y Diesel
 - Service Engine Soon illuminated
 - "Reduce Engine Power" displayed
 - FC 6292 EKPS, control voltage low, and
 - FC 4BDB, Fuel pre-pressure, too high

CAUSE

- FC 4BDB – DDE diagnostic error
- FC 6292 – under investigation

FIELD

- Perform ISTA test module B1612_SPG00
 - check EKPS system voltage
 - check integrity of wiring & connectors
- Perform repairs as needed
- Clear and disregard FC 4BDB

FIELD

- Improved diagnostic software (elimination of implausible 4BDB) is planned for release in 04/09

ISTA D2.11.0 Update

- "What's New" document on ISTA homepage
- Vehicle Test on most vehicles has improved performance
- Same Technical Data as DIS V56
- Refer to Release Notes on CenterNet

- Refer to CenterNet – Aftersales Portal – Service – Workshop Technology

Workshop Technology



Vehicle Diagnostics

- Quick Reference Guides
- ISTA Diagnostics
- ISTA Diagnosis Feedback
- ISTA Diagnostics Quick Start
- DSM Manuals
- ISS - Online Mode
- ISTA Prediag

Documents

- ISTA User Manual
- ISTA Release Notes
- ISS DS
- ISTA DS 8.0 Diagnostics Feedback
- ISTA Release Notes
- ISS DS
- ISTA DS 10.0 Diagnostics Feedback



Vehicle Programming

- Documents
- ISS & ISTAP Installation Manual
- ISTA Release Notes 2.0.2.1
- ISTA User Documentation
- ISTA Technical Training

Training Videos

- ISS & ISTAP Installation
- ISS & ISTAP Installation Manual
- ISS & ISTAP Installation Manual
- ISS & ISTAP Installation Manual
- ISS & ISTAP Installation Manual



Tools Administration Installation & Maintenance

- 2x Diagnostics Installation Manual
- 2x Programming - ISS & ISTAP Installation Manual
- 2x Installation Guide
- Including additional ISS & ISTAP



Workshop Management

- ISS License Program
- ISS License Order Form
- 2x User Agreement
- Workshop Standards 2008

3x Center Administrator Training Manual

- ISS - Hardware and Maintenance
- ISS -
- ISS - Workshop System

ISTA VIN Updates

- Install ISTA D2.11.0
- Bi-weekly VIN update via Jetstream will ensure all vehicles recognized
- When expecting an Online Update
 - Ensure at end of the day ISID is on the Start Screen
 - All diagnostic sessions closed

New software is available:

Package Name	Version	Size	Description
ISTA-VIN	09.01.29	2.7 MB	ISTA VIN Package

Available packages: 1
 Total amount of transfer volume: 2.7 MB
 Installation medium: 0 / 0
 Disc ID: null

Please download packages during working hours only in an urgent case!

ISTA Diagnosis Feedback

- Always include VIN of vehicle
- Test plan number
- Brief description of problem

Profiles In Achievement (PIA)

- Announcement of PIA 2008 Winners and 2009 Performance Objectives
 - Week of February 23 via DCSnet bulletin and PIA website
- Technical Testing
 - Test 1 of 3 available on PIA website first week of March 2009